



ecomode
performance

Kässbohrer
Driven by professionals®



performance T4-235

TRAILER

The ecomode performance line includes closed motor vehicles and central-axle trailers, especially for the safe transport of particularly exclusive limousines, precious prototypes, individual exhibition vehicles and vintage cars.

- ◆ Coupled to S2-180, the carrier offers a load factor of „6“ or space for up to five SUV's
- ◆ Comfortable loading of vehicles with low ground clearance
- ◆ Upper lifting platform with fast-moving telescopic cylinders
- ◆ Large hinge doors with optional central locking system on both sides of the vehicle provide easy access and good visibility to the loaded vehicles
- ◆ Flexible in use, especially for urban and distribution transport

WEIGHTS & DIMENSIONS

Technically permissible maximum mass:
23,450 kg

Maximum payload:
12,710 kg

Length of inside tracks:
10,250 mm

Entry width:
2,300 mm

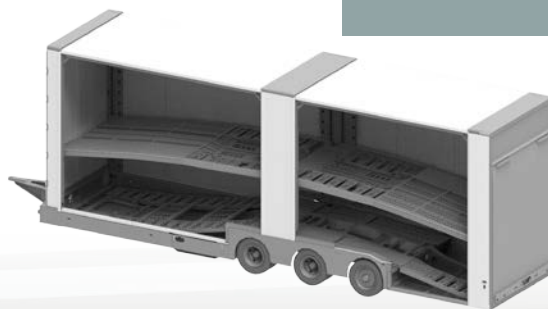
Overall vehicle length:
max. 11,970 mm

Notice:
The T4-235 trailer is combined with the S2-180 truck.

Type:



ecomode performance S2-180



ecomode performance S1-075
ecomode performance S2-260
ecomode performance S4-260 L

ecomode performance S2-180
ecomode performance T2-180
ecomode performance T4-235

capitan performance 6-280
ecotrans performance 6-250

Configuration of the *ecomode* trailer performance T4-235

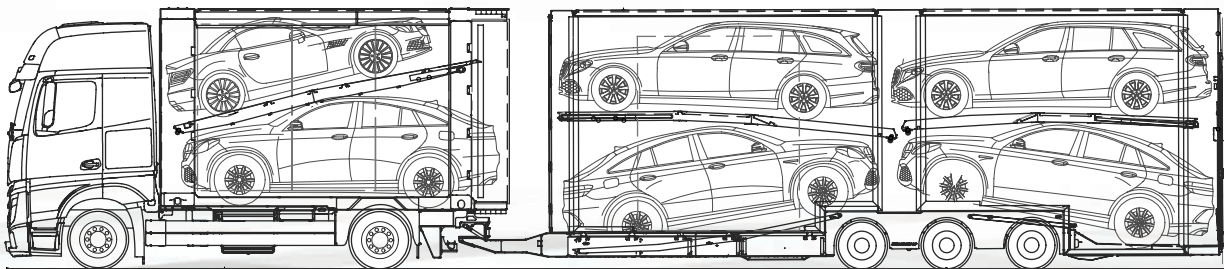
Standard equipment:

- Fully hot-dip galvanised lower loading platform with hydraulic height adjustment at front end, above the axles and at rear end
- Front extension of the platform for loading the truck
- Two-part upper loading platform
- Upper platforms: spindle lifting pillars at trailer front and rear end, telescopic lifting cylinders in the middle
- Two folding doors at the front end for loading the truck
- Hydraulic tailboard
- EBS braking system, including axle relief for the rearmost axle in case of unloaded transport

Optional equipment:

- Radio remote control for all *ecomode* functions
- Central door locking system
- Multicolour lacquering / metallic lacquering

For more details and additional equipment options please refer to the respective data sheets. The illustrations are used as examples and might show vehicles with optional equipment. We reserve the right to make changes due to errors or based on technical progress.



Loading example shows ecomode performance S2-180 combined with ecomode performance T4-235 with 4,00 m Height. Observe national regulations!

Driven by professionals®

When you purchase a Kässbohrer vehicle transporter, you not only acquire the vehicle but also a wealth of services and the certainty that you are driving the transporter of a company that is the market leader concerning quality and consistency.

Kässbohrer vehicle transporters are compatible with the chassis of all leading truck manufacturers. The design of Kässbohrer vehicle transporters makes it possible to combine motor vehicles and trailers of different model series and thus precisely adapt them to your individual transport requirements.

All common spare parts are quickly available from the Kässbohrer Service Center and from the contractual partners. A user-friendly spare parts catalogue, with a lot of additional information and the possibility of online access, guarantees problem-free ordering. Repairs are carried out quickly and reliably in our own workshop in Salzburg-Eugendorf (Austria) and at the contracted workshops on the main European transport routes.

